



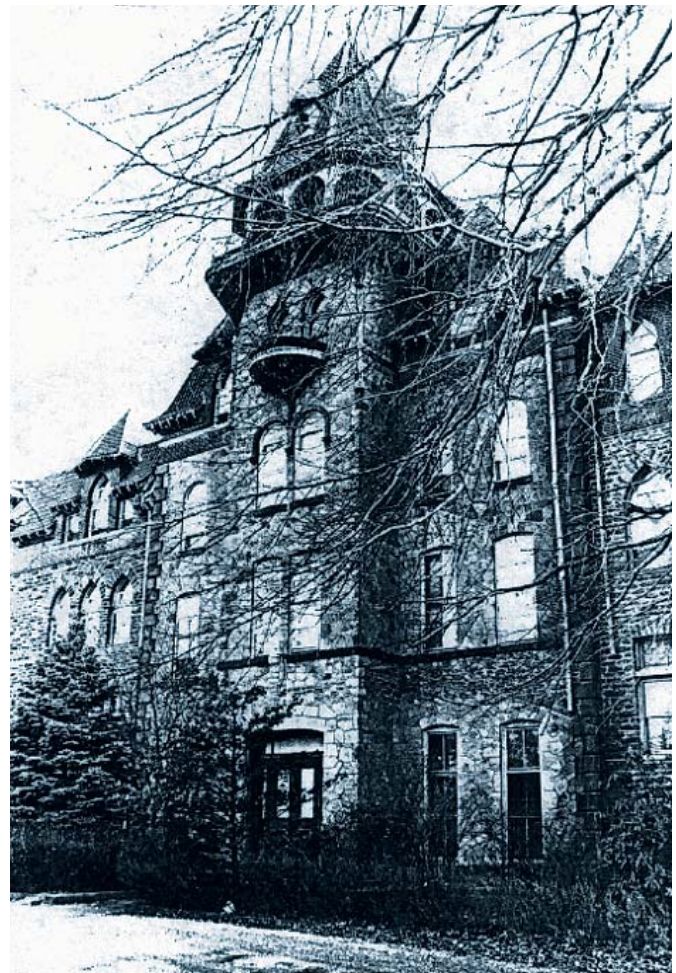
Germantown Settlement Charter School

Philadelphia, PA

CLIENT:

Greater Germantown Housing Development Corporation (GGHDC)

GGHDC has been the significant community-based development corporation in Germantown for many years. With hundreds of new and renewed houses and apartments accomplished, and a neighborhood shopping center built, GGHDC's next initiative was to develop a charter school for up to 500 neighborhood students, grades 5 through 8. The former Manna Bible Institute, a complex of six stone and brick buildings dating from the late 19th and 20th centuries, became the school's new location. KSK faced two major challenges in completing the project: a short project schedule generated by the need to move the students in to the new space and rehabilitating the fire-ravaged main building. Adapting the historic complex for its new educational purpose required sensitive adjustment given its original use as an orphanage and its listing in the Philadelphia Register of Historic Places.



Jewish Foster Home and Orphanage 700 E. Church Lane