



# The Philadelphia School Renovations

Philadelphia, PA

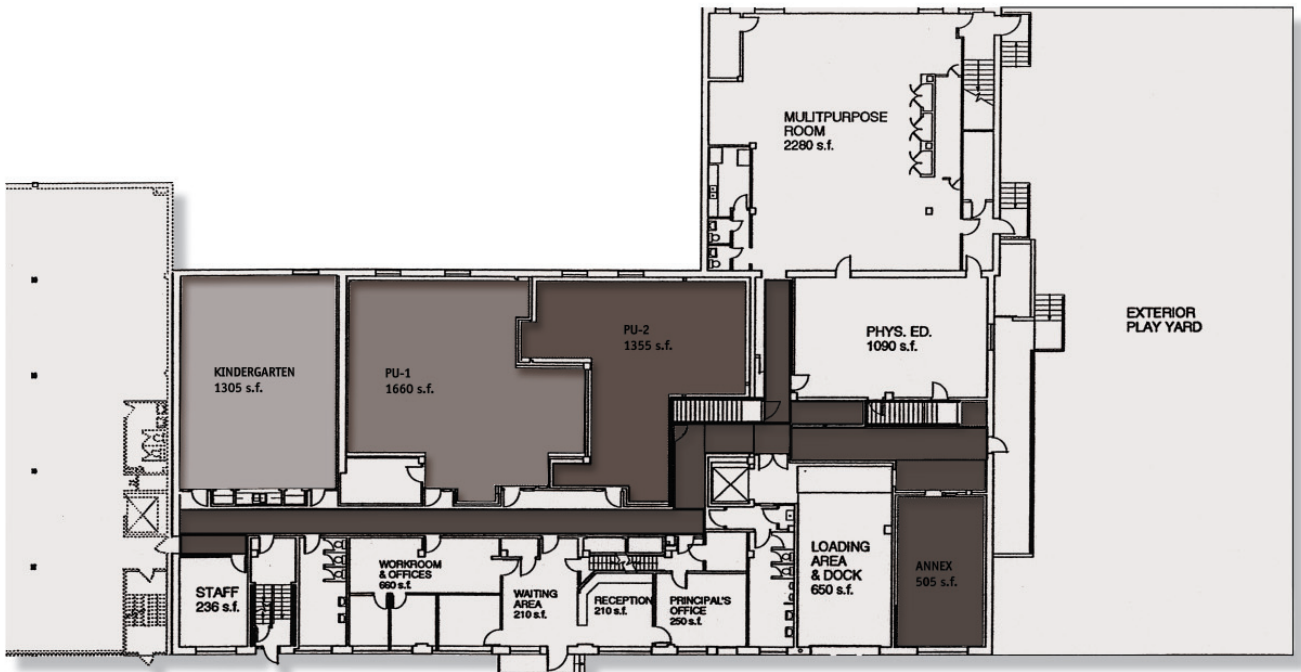
## CLIENT:

### The Philadelphia School

KSK served as The Philadelphia School's consulting architect for a number of years. A program of renovations to the existing structure for this independent K-8 school included reorganization of the primary and kindergarten spaces, relocation of school offices and staff lounge, modifications to the HVAC and lighting systems, conversion of office areas to classrooms, and interior improvements including new built-ins, cabinets, desks, computer network of computers, and new carpeting.

KSK converted the previously unused basement into classroom, tutorial, instrumental practice, and after school program spaces. All of the building's systems have been replaced or upgraded and a new corridor and exit stairway have been added.

The firm prepared a capital plan to accommodate a new gymnasium and expanded middle school program. The firm explored several alternative design concepts including rehabilitation of unused space, construction of a new facility in an existing playground, and construction of a new facility on a parking lot across the street. The school selected an alternative that involved relocation of the existing middle school, partial demolition, and new construction



*New layout first floor*